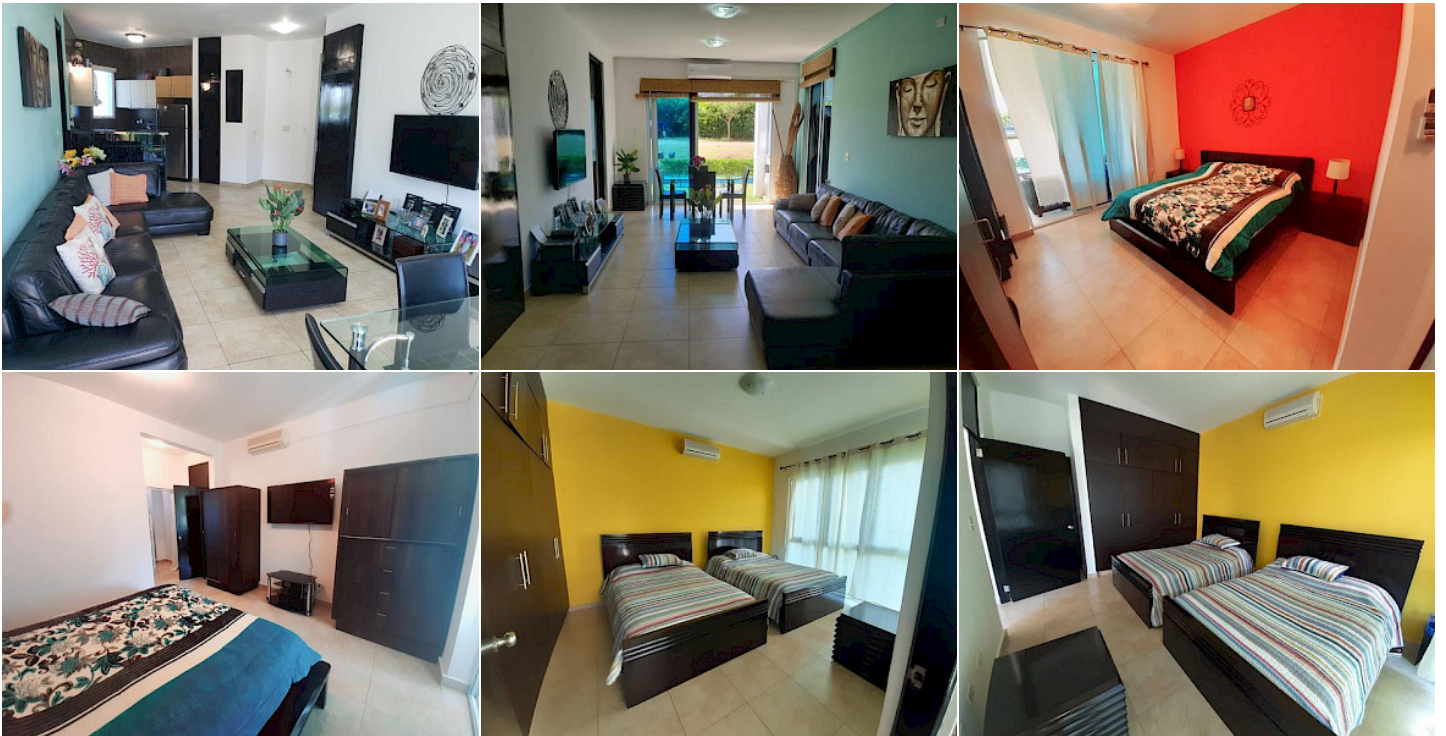


# APARTMENT IN PLAYA BLANCA

Alquiler

**\$1,200**



## Ubicación de la propiedad

Provincia	Locations
Distrito	Coclé
Corregimiento	Antón
Barrio	Río Hato
Calle	PH FOUNDERS 3 Y 4

## Detalles de la Propiedad

Property ID:	MLS-16160
Listing Type:	Alquiler
Property Type:	Apartments
Building   Neighborhood:	PH FOUNDERS 3 Y 4
Price:	\$1,200
Monthly Fee:	\$200
Year Built:	2009
Construction Area:	151 m <sup>2</sup>
Bedrooms:	2
Bathrooms:	2
Parking Lots:	1

## APARTMENT IN PLAYA BLANCA

Alquiler

**\$1,200**

### Descripción de la propiedad

? Playa Blanca: Your Coastal Paradise in Panama ? ?? Privileged Location ? Just 85 minutes from Panama City ?? 5 minutes from Rio Hato Airport ?? 1 minute from Mareas Mall ? Total Exclusivity ? Unique Features Private community with direct access to the beach Large green areas First-class water sports Pool, restaurants, Spa and Hotel ? Dream Apartment ? Special Features Ground floor with private green area 2 large bedrooms 2 full bathrooms Living room with panoramic view Floor to ceiling windows Fully equipped kitchen ? Security and Comfort 100% electric building Automatic power plant Own water well Barbecue area Family terrace ? Nearby Amenities Supermarkets steps away Pharmacies Restaurants Town Center with boutiques ? Rental Options More than 6 months: USD 1,200.00/month 1-5 months: USD 1,500.00/month ? Professional Guarantee Managed by a real estate agent with 17 years of experience and verifiable public comments. ? Take advantage now! Don't miss the opportunity to live in the most complete and luxurious development on the coast! Call now to schedule your visit ???

### Características

Jardín	Piscina	Rancho-Gazebo	Acceso fácil
Próximo a área comercial	Orientada a la familia	Próximo a área recreacional	Servicio de agua potable
Servicios subterráneos	Teléfono a Terreno	Terreno Plano	Acceso a carretera
Vista jardines	Planta eléctrica total	Tanque de reserva de agua	

### Amenidades

- **The monthly fee includes:** Administración, Agua, Conserje, Mantenimiento de áreas comunes, Gas, Seguridad
- **Air Conditioner:** Split
- **Access:** Asfalto
- **Roof:** Concreto armado
- **Floor:** Cerámico
- **Water:** Pozo
- **Construction:** Bloque, Concreto, Gypsum
- **Shared Services:** Acceso silla de ruedas, Area verde, Gimnasio, Piscina exterior, Estacionamiento de Visitas